

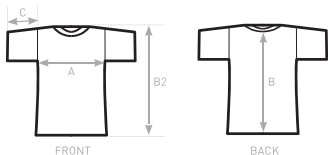
FRONT

BACK

<b>B&amp;C SIREN SONG TW S50</b>	<b>XS-S</b>	<b>M-L</b>	<b>XL-XXL</b>
<b>A HALF CHEST</b>	<b>42</b>	<b>45</b>	<b>48</b>
<b>B CENTER BACK LENGTH</b>	<b>120</b>	<b>120</b>	<b>120</b>
<b>C BODY LENGTH FROM NECK POINT</b>	<b>126</b>	<b>126,5</b>	<b>127</b>



<b>B&amp;C SUMMER FEVER TW S54</b>	XS-S	M-L	XL-XXL
A BODY WIDTH	43	46	49
B BODY LENGTH FROM NECK POINT	66	67,5	69



**B&C FLAMINGO /MEN TM S51**

A HALF CHEST

B CENTER BACK LENGTH

B2 BODY LENGTH FROM SHOULDER POINT

C SLEEVE LENGTH

XS

S

M

L

XL

XXL

-

47

50

53

56

59

-

66

68

70

72

74

-

68

70

72

74

76

-

18,5

18,5

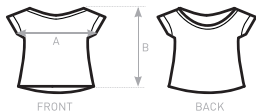
18,5

18,5

18,5



<b>B&amp;C TROPICAL TW S53</b>	<b>XS</b>	<b>S</b>	<b>M</b>	<b>L</b>	<b>XL</b>	<b>XXL</b>
<b>A</b> BODY WIDTH <small>SLEEVE EDGE TO SLEEVE EDGE</small>	<b>61</b>	<b>64</b>	<b>67</b>	<b>70</b>	<b>73</b>	-
<b>B</b> BODY LENGTH	<b>49</b>	<b>52</b>	<b>55</b>	<b>57</b>	<b>60</b>	-



**B&C ORCHID TW S52**

A BODY WIDTH SLEEVE EDGE TO SLEEVE EDGE

B BODY LENGTH

XS-S

64

64

M-L

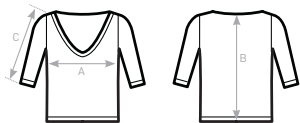
67

67

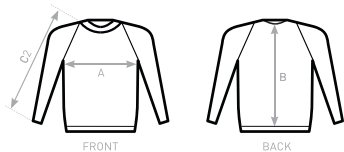
XL-XXL

70

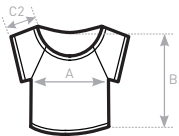
70



<b>B&amp;C RISING SUN ww s41</b>	XS	S	M	L	XL	XXL
A HALF CHEST	49	52	55	58	61	-
B CENTER BACK LENGTH	53	54,5	56	57,5	59	-
C SLEEVE LENGTH	41	42	43	44	45	-

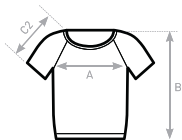


<b>B&amp;C REEF /MEN WM S40</b>	XS	S	M	L	XL	XXL
A HALF CHEST	-	49	52	55	58	61
B CENTER BACK LENGTH	-	65	67	69	71	73
C2 SLEEVE LENGTH (RAGLAN)	-	82,5	83,5	84,5	85,5	86,5



<b>B&amp;C BLISS /WOMEN ww S43</b>	XS	S	M	L	XL	XXL
A HALF CHEST	44	47	50	53	56	-
B CENTER BACK LENGTH	44	47	50	53	56	-
C2 SLEEVE LENGTH (RAGLAN)	16	17	18	19	20	-

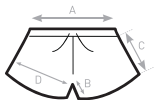




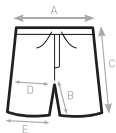
<b>B&amp;C BLISS /MEN WM S42</b>	<b>XS</b>	<b>S</b>	<b>M</b>	<b>L</b>	<b>XL</b>	<b>XXL</b>	<b>XXXL</b>
A HALF CHEST	-	49	52	55	58	61	-
B CENTER BACK LENGTH	-	65	67	69	71	73	-
C2 SLEEVE LENGTH (RAGLAN)	-	32,5	33,5	34,5	35,5	36,5	-



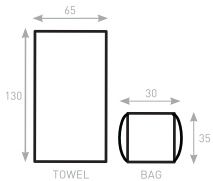
<b>B&amp;C EDEN /WOMEN WW S44</b>	XS	S	M	L	XL	XXL
A HALF CHEST	52	55	58	61	64	-
B CENTER BACK LENGTH	48,5	50	51,5	53	54,5	-
C2 SLEEVE LENGTH (RAGLAN)	64	65	66	67	68	-



<b>B&amp;C SPLASH /WOMEN BW S61</b>	<b>XS</b>	<b>S</b>	<b>M</b>	<b>L</b>	<b>XL</b>	<b>XXL</b>
A HALF WAIST	35	37	40	43	46	-
B INSEAM	5	6	7	8	9	-
C SIDE SEAM	19	20	21	22	23	-
D 1/2 THIGH	32	33,5	35	36,5	38	-



<b>B&amp;C SPLASH /MEN BM S60</b>	<b>XS</b>	<b>S</b>	<b>M</b>	<b>L</b>	<b>XL</b>	<b>XXL</b>
A HALF WAIST	-	35	38	41	44	47
B INSEAM	-	20	21	22	23	24
C SIDE SEAM	-	39,5	40,5	41,5	42,5	43,5
D 1/2 THIGH	-	32,5	34	35,5	37	38,5
E 1/2 BOTTOM	-	26,5	28	29,5	31	32,5



**B&C SEASIDE VIEW AU S01**

BAG SIZE

TOWEL SIZE

30 X 35 CM

65 X 130 CM



<b>B&amp;C ESPADRILLE /MEN AM S04</b> SIZE	40	41	42	43	44	45
A RECOMMENDED PRINTING AREA	MAX.: l=5CM X L=6CM (BASED ON SIZE 40)					



<b>B&amp;C ESPADRILLE /WOMEN AW S05</b> SIZE	36	37	38	39	40	41
A RECOMMENDED PRINTING AREA	MAX.: l=4CM X L=5CM (BASED ON SIZE 36)					