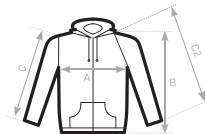


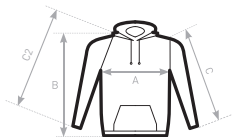
C= SET-IN SLEEVE
C2= RAGLAN SLEEVE

B&C HOODED FULL ZIP /W. WW 642	XS	S	M	L	XL	XXL	XXXL
A HALF CHEST	46	49	52	55	59	63	-
B BODY LENGTH	59,6	59,7	59,9	62	65,2	65,4	-
C SLEEVE LENGTH	60,1	61	62	62,9	64,5	66,1	-



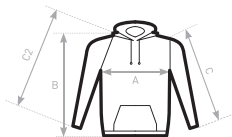
C= SET-IN SLEEVE
C2= RAGLAN SLEEVE

B&C HOODED FULL ZIP /M. WM 647	XS	S	M	L	XL	XXL	XXXL
A HALF CHEST	-	55,7	58,7	61,7	65,7	69,7	73,7
B BODY LENGTH	-	71,3	71,5	71,7	74	77,2	80,4
C SLEEVE LENGTH	-	63,1	64,1	65	66,6	68,2	69,8



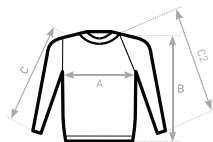
C= SET-IN SLEEVE
C2= RAGLAN SLEEVE

B&C HOODED WU 620	XXS	XS	S	M	L	XL	XXL	XXXL
A HALF CHEST	46	50	53	56,5	60	63,5	67	70,5
B BODY LENGTH	58	63	65,5	67,5	69,5	71,5	73,5	75,5
C SLEEVE LENGTH	51	56	62,5	63,5	64,5	65,5	66,5	67,5



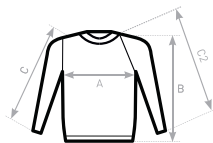
C= SET-IN SLEEVE
C2= RAGLAN SLEEVE

B&C CAT /WOMEN ww 625	XS	S	M	L	XL	XXL	XXXL
A HALF CHEST	43	45,5	48	50,5	53	55,5	-
B BODY LENGTH	55	56,5	58	59,5	61	62,5	-
C2 SLEEVE LENGTH	69	70,5	72	73,5	75	76,5	-



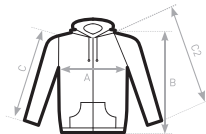
C= SET-IN SLEEVE
C2= RAGLAN SLEEVE

B&C SET IN WU 600	XS	S	M	L	XL	XXL	XXXL
A HALF CHEST	-	53	56,5	60	63,5	67	70,5
B BODY LENGTH	-	66	68	70	72	74	76
C SLEEVE LENGTH	-	62,5	63,5	64,5	65,5	66,5	67,5

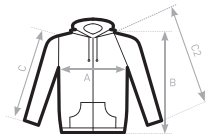


C= SET-IN SLEEVE
C2= RAGLAN SLEEVE

B&C OPEN HEM WU 610	XS	S	M	L	XL	XXL	XXXL
A HALF CHEST	-	53	56,5	60	63,5	67	-
B BODY LENGTH	-	66	68	70	72	74	-
C SLEEVE LENGTH	-	60,5	61,5	62,5	63,5	64,5	-

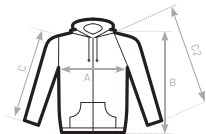


B&C WONDER /W. WW 641	XS	S	M	L	XL	XXL	XXXL
A HALF CHEST	46	48,5	51	53,5	56	58,5	-
B BODY LENGTH	63	64,5	66	67,5	69	70,5	-
C SLEEVE LENGTH	62	63	64	65	66	67	-

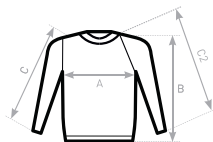


C= SET-IN SLEEVE
C2= RAGLAN SLEEVE

B&C MONSTER /M. WM 645	XS	S	M	L	XL	XXL	XXXL
A HALF CHEST	-	53	56,5	60	63,5	67	70,5
B BODY LENGTH	-	65,5	67,5	69,5	71,5	73,5	75,5
C SLEEVE LENGTH	-	62,5	63,5	64,5	65,5	66,5	67,5

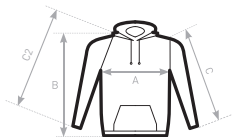


B&C SPIDER /M. WM 646	XS	S	M	L	XL	XXL	XXXL
A HALF CHEST	-	50,5	53,5	56,5	59,5	62,5	65,5
B BODY LENGTH	-	68	70	72	74	76	78
C SLEEVE LENGTH	-	65	66	67	68	69	70



C= SET-IN SLEEVE
C2= RAGLAN SLEEVE

B&C ID.002 WU I20	XS	S	M	L	XL	XXL	XXXL
A HALF CHEST	-	51,5	55	58,5	62	65,5	69
B BODY LENGTH	-	66	68	70	72	74	76
C SLEEVE LENGTH	-	62,5	63,5	64,5	65,5	66,5	67,5

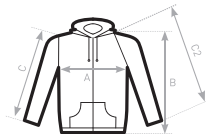


C= SET-IN SLEEVE
C2= RAGLAN SLEEVE

B&C ID.003 WU I21	XS	S	M	L	XL	XXL	XXXL
A HALF CHEST	-	51,5	55	58,5	62	65,5	69
B BODY LENGTH	-	65,5	67,5	69,5	71,5	73,5	75,5
C SLEEVE LENGTH	-	62,5	63,5	64,5	65,5	66,5	67,5

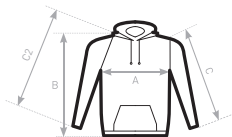


B&C ID.004 WU I22	XS	S	M	L	XL	XXL	XXXL
A HALF CHEST	-	52	55	58	61	64	67
B BODY LENGTH	-	68	70	72	74	76	78
C SLEEVE LENGTH	-	65	66	67	68	69	70



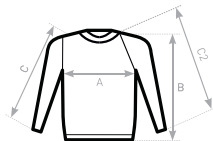
C= SET-IN SLEEVE
C2= RAGLAN SLEEVE

B&C HOODED FULL ZIP /K. WK 682	1/2	3/4	5/6	7/8	9/11	12/14
A HALF CHEST	-	38	40	42	46	50,5
B BODY LENGTH	-	45	49,4	52,7	58,3	64,1
C SLEEVE LENGTH	-	39,9	42,6	46,2	53,7	61,2



C= SET-IN SLEEVE
C2= RAGLAN SLEEVE

B&C HOODED /KIDS WK 681	1/2	3/4	5/6	7/8	9/11	12/14
A HALF CHEST	-	37	40	43	46	50
B BODY LENGTH	-	43	48	53	58	63
C SLEEVE LENGTH	-	33	37	41	45	50



C= SET-IN SLEEVE
C2= RAGLAN SLEEVE

B&C SET IN /KIDS WK 680	1/2	3/4	5/6	7/8	9/11	12/14
A HALF CHEST	-	36	40	43	46	50
B BODY LENGTH	-	43	48	53	58	63
C SLEEVE LENGTH	-	33	37	41	45	50