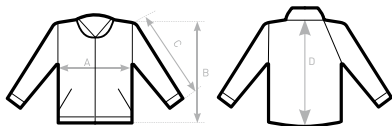
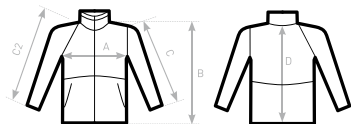


B&C TROOPER /MEN JM963	XS	S	M	L	XL	XXL	XXXL
A HALF CHEST	-	56	59	62	65	68	71
B BODY LENGTH FROM NECK POINT	-	68	70	72	74	76	78
C SLEEVE LENGTH	-	22	23	24	25	26	27
D CENTER BACK LENGTH	-	66,5	68,5	70,5	72,5	74,5	76,5

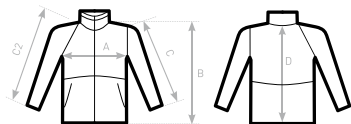


B&C TROOPER /WOMEN JM964	XS	S	M	L	XL	XXL	XXXL
A HALF CHEST	48	51	54	57	60	63	-
B BODY LENGTH FROM NECK POINT	60	62	64	66	68	70	-
C SLEEVE LENGTH	62	63,5	65	66,5	68	69,5	-
D CENTER BACK LENGTH	58,5	60,5	62,5	64,5	66,5	68,5	-



C2= RAGLAN

B&C MULTI-ACTIVE /MEN JM825	XS	S	M	L	XL	XXL	XXXL
A HALF CHEST	-	55	58	61	64	67	70
B BODY LENGTH FROM NECK POINT	-	72,5	74,5	76,5	78,5	80,5	82,5
C SLEEVE LENGTH	-	63,5	65	66,5	68	69,5	71
D CENTER BACK LENGTH	-	71	73	75	77	79	81



C2= RAGLAN

B&C MULTI-ACTIVE /WOMEN JM826

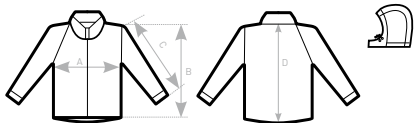
A HALF CHEST

B BODY LENGTH FROM NECK POINT

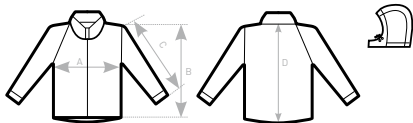
C SLEEVE LENGTH

D CENTER BACK LENGTH

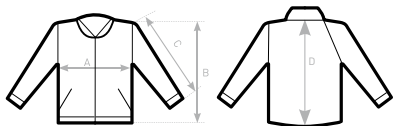
XS	S	M	L	XL	XXL
49	52	55	58	61	64
69	71	73	75	77	79
64	65	66	67	68	69
67	69	71	73	75	77



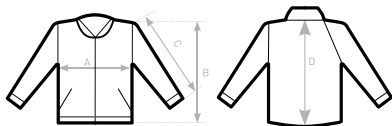
B&C SUPERHOOD /MEN JM940	XS	S	M	L	XL	XXL	XXXL
A HALF CHEST	-	55	58	61	64	67	70
B BODY LENGTH FROM NECK POINT	-	72	74	76	78	80	82
C SLEEVE LENGTH	-	67	68,5	70	71,5	73	74,5
D CENTER BACK LENGTH	-	69,5	71,5	73,5	75,5	77,5	79,5



B&C SUPERHOOD /WOMEN JM941	XS	S	M	L	XL	XXL	XXXL
A HALF CHEST	49	52	55	58	61	64	-
B BODY LENGTH FROM NECK POINT	61	63	65	67	69	71	-
C SLEEVE LENGTH	61	62,5	64	65,5	67	68,5	-
D CENTER BACK LENGTH	59	61	63	65	67	69	-



B&C CREW BOMBER /MEN JM961	XS	S	M	L	XL	XXL	XXXL
A HALF CHEST	-	56	59	62	65	68	71
B BODY LENGTH FROM NECK POINT	-	68	70	72	74	76	78
C SLEEVE LENGTH	-	60	61,5	63	64,5	66	67,5
D CENTER BACK LENGTH	-	66,5	68,5	70,5	72,5	74,5	76,5



B&C CREW BOMBER /WOMEN JM962

A HALF CHEST

B BODY LENGTH FROM NECK POINT

C SLEEVE LENGTH

D CENTER BACK LENGTH

XS

S

M

L

XL

XXL

48

51

54

57

60

63

60

62

64

66

68

70

62

63,5

65

66,5

68

69,5

58

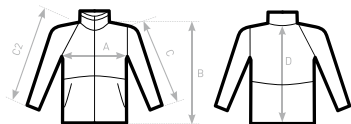
60

62

64

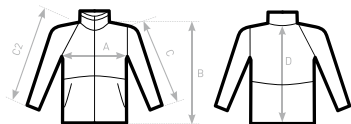
66

68



C2= RAGLAN

B&C CORPORATE 3-IN-1 JU873	XS	S	M	L	XL	XXL	XXXL
A HALF CHEST	55	58	61	64	67	70	73
B BODY LENGTH FROM NECK POINT	81	82,5	84	85,5	87	88,5	90
C SLEEVE LENGTH	65,5	67	68,5	70	71,5	73	74,5
D CENTER BACK LENGTH	78,5	80	81,5	83	84,5	86	87,5



C2= RAGLAN

B&C ID.701 SOFTSHELL /WOMEN JW163

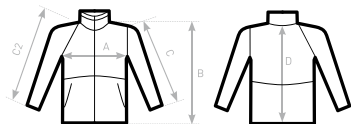
A HALF CHEST

B BODY LENGTH FROM NECK POINT

C SLEEVE LENGTH

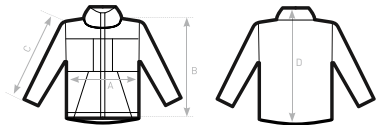
D CENTER BACK LENGTH

XS	S	M	L	XL	XXL
43	46	49	52	55	58
57	59	61	63	65	67
58	59	60	61	62	63
55	57	59	61	63	65

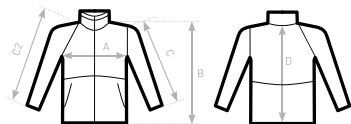


C2= RAGLAN

B&C ID.701 SOFTSHELL JUI62	XS	S	M	L	XL	XXL	XXXL
A HALF CHEST	-	53	56	59	62	65	68
B BODY LENGTH FROM NECK POINT	-	73	74,5	76	77,5	79	80,5
C SLEEVE LENGTH	-	63,5	65	66,5	68	69,5	71
D CENTER BACK LENGTH	-	71	72,5	74	75,5	77	78,5



B&C SHELTER PRO JUC41	S	M	L	XL	XXL	XXXL	4XL
A HALF CHEST	59	62	65	68	71	74	77
B BODY LENGTH FROM NECK POINT	77	78	79	80	81	82	83
C SLEEVE LENGTH	65,5	67	68,5	70	71,5	73	74,5
D CENTER BACK LENGTH	76	77	78	79	80	81	82



C2= RAGLAN

B&C SHIELD SOFTSHELL PRO JUC42	S	M	L	XL	XXL	XXXL	4XL
A HALF CHEST	51	54	57	60	63	66	69
B BODY LENGTH FROM NECK POINT	71	72,5	74	75,5	77	78,5	80
C SLEEVE LENGTH	63	64,5	66	67,5	69	70,5	72
D CENTER BACK LENGTH	69	70,5	72	73,5	75	76,5	80



B&C SAFRAN TIMELESS /WOMEN PW457

A HALF CHEST

B BODY LENGTH FROM NECK POINT

XS

41

61,5

S

44

63

M

47

64,5

L

50

66

XL

53

67,5

XXL

56

69